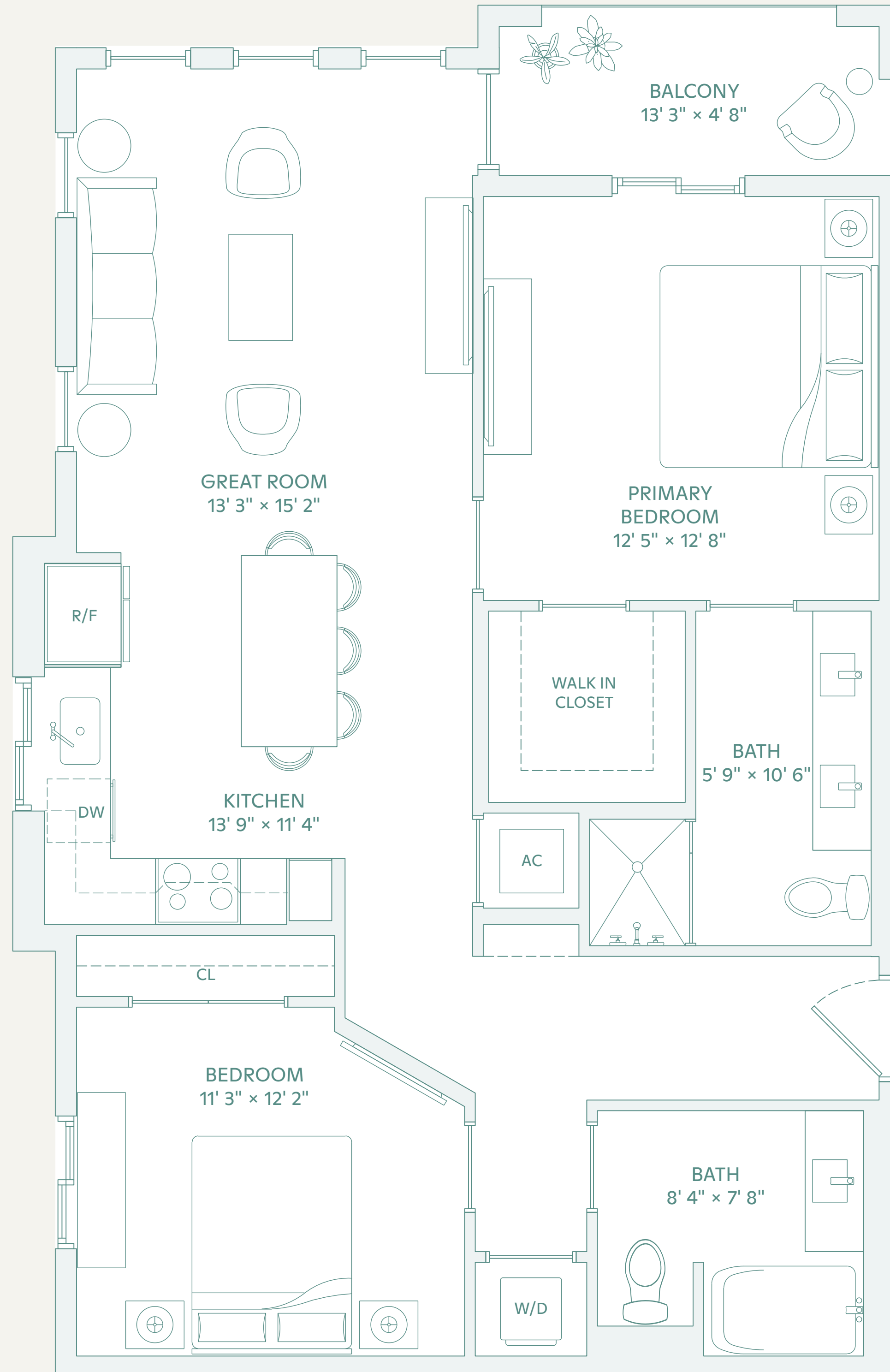


RESIDENCE

# B1



**2 Bedrooms**  
**2 Bathrooms**

**Indoor: 1,062 SF**  
**Outdoor: 68 SF**  
**Total: 1,130 SF**

**Unit features**

- Whirlpool stainless steel appliances
- Garbage disposal
- Dishwasher
- Microwave
- Electric range stove top
- Quality wood cabinetry with two-toned combination
- Kitchen full height counter backsplash
- Open Living Room and Dining Space
- Kohler bathroom fixtures (polished chrome)
- Ceiling fan
- Wood-vinyl flooring
- Walk in closets
- Balcony

# EDERA

2085 S. CONGRESS AVENUE  
PALM SPRINGS, FL 33406

EDERAPALMSPRINGS@WILLOWBRIDGEPC.COM  
TEL: 561.283.3033

\* PRICE AND AVAILABILITY SUBJECT TO CHANGE. ALL DIMENSIONS AND SQUARE FOOTAGE ARE APPROXIMATE.

